



Children's Hospital
New Orleans
LCMC Health

Children's Hospital New Orleans Flight Path Changes June 2020

The map images below show flight patterns before the move of Children's Hospital's helistop on May 18, flight paths between May 18 and June 5, and flight paths immediately following the flight path changes noted below (6/5/20 – 6/23/20). The updated flight paths implemented after June 5 have resulted in significantly fewer flights traveling directly over the neighborhood than prior to our helistop move (May 18).

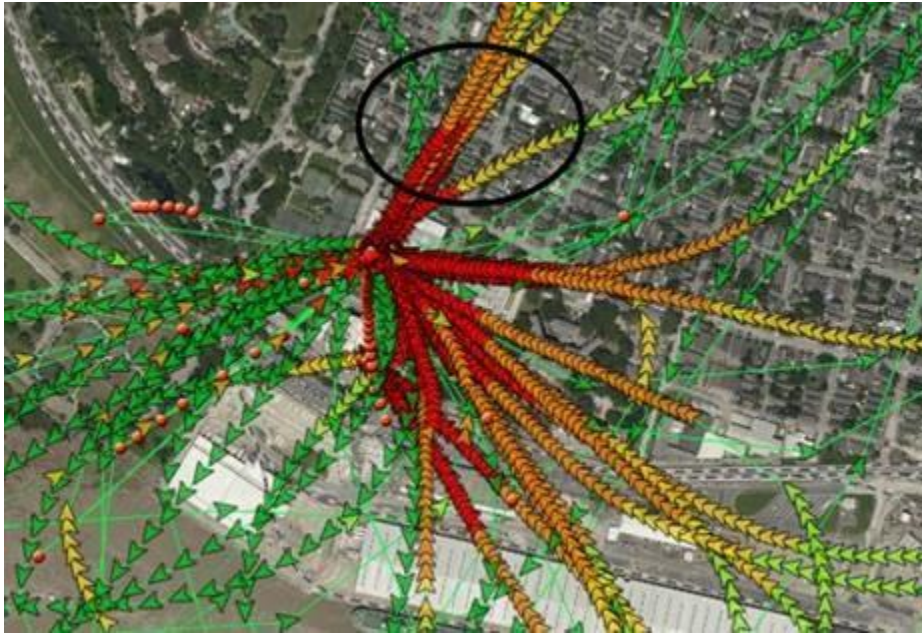
Following the move of Children's Hospital's helistop, the hospital immediately addressed the following:

- **Not using the north flight path directly over the neighborhood (which was the flight path given to Children's initially by the FAA),** except during Instrument Meteorological Conditions (IMC), which means low ceiling and visibility, or "poor" weather. Pilots were trained on this expectation and began using the revised preferred flight paths whenever safe to do so. *See maps below.*
- **Revising the east and west flight paths to orient them southeast and southwest,** minimizing flights over residential homes. Pilots were trained in this expectation and use these routes whenever possible. *See maps below.*

Flight paths prior to helipad relocation (1.1.20 – 5.17.20)



Flight paths immediately following helipad relocation (5.18.20 – 6.4.20)



Flight paths immediately following flight path changes (6.5.20 – 6.23.20)



Map legend:

Small arrows indicate actual flight paths, with colors signifying speed.