

# Monthly Children's Hospital Helicopter Activity Summary

June 2021



36

Patient Transport Flights



1

Flight Used the Northern Flight Path

2

Overnight Patient Transport Flights



95

Flights Legs to and from Lakefront Airport



## Patients were flown to Children's Hospital for...

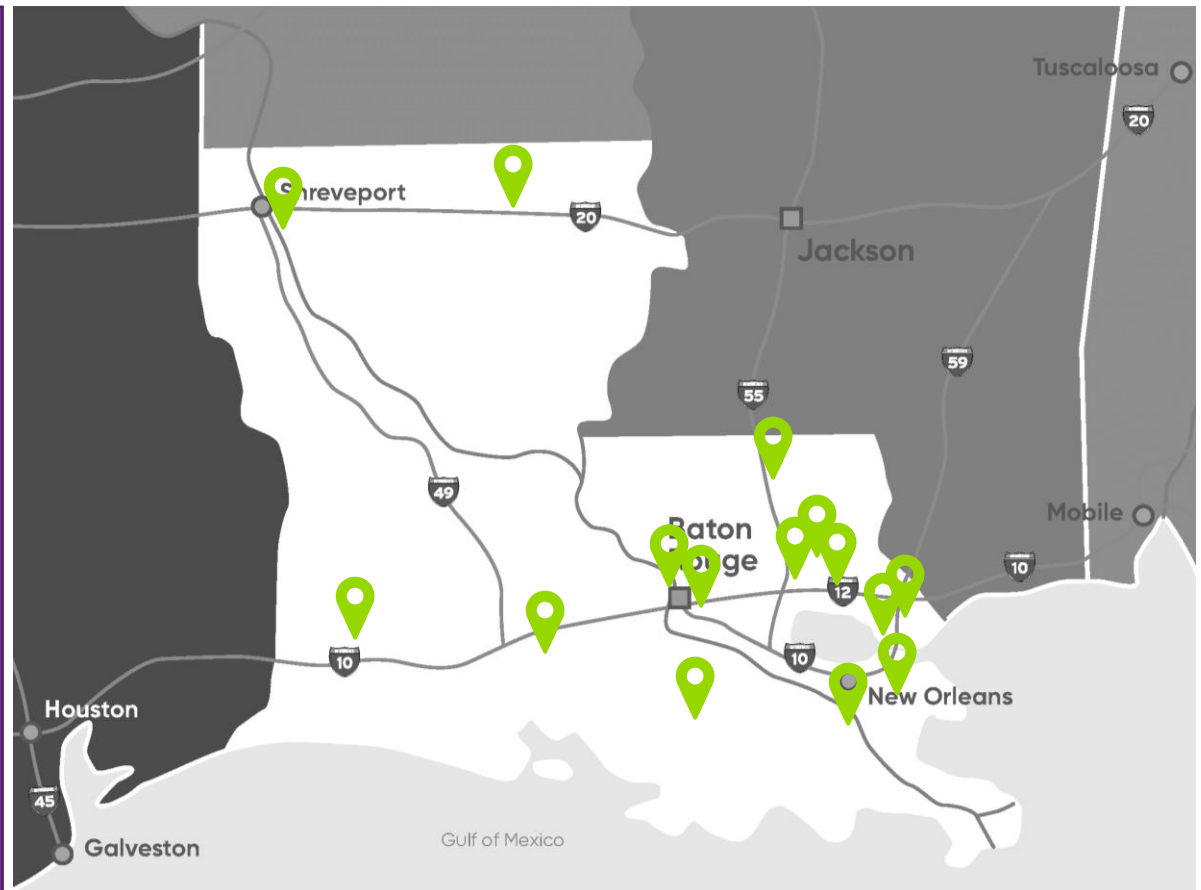
- 14 **Pediatric Critical Care Patients**  
Example: seizures, respiratory failure, meningitis
- 20 **Neonatal Intensive Care Patients**  
Example: complications due to premature birth, respiratory failure
- 1 **Cardiac Critical Care Patients**  
Example: cardiac arrest
- 1 **Trauma Patients**  
Example: open skull fracture, brain bleed
- 0 **Other**



**Children's Hospital**  
New Orleans  
LCMC Health

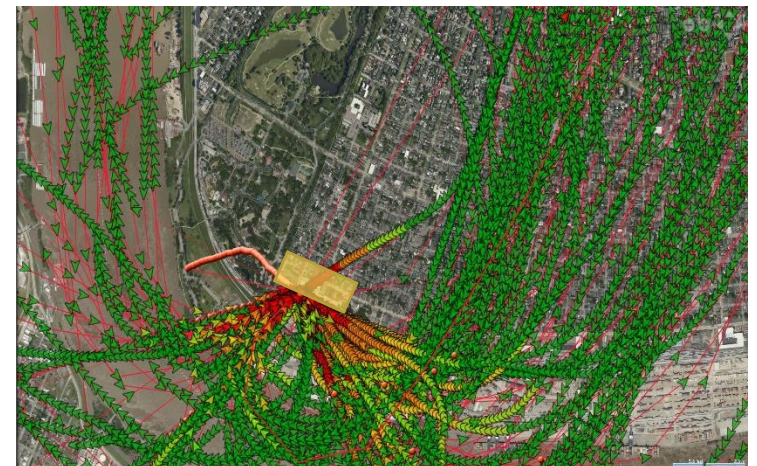
## Referring Facilities:

- East Jefferson General Hospital
- Glenwood Regional Medical Center
- Highland Community Hospital
- Hood Memorial Hospital
- Lake Charles Memorial Hospital for Women – Gauthier Campus
- Lakeview Regional Medical Center
- North Oaks Medical Center
- Our Lady of Lourdes Women’s & Children’s Hospital – Lafayette
- Our Lady of the Lake – Children’s Hospital
- Rapides Women’s and Children’s Hospital
- Slidell Memorial Hospital
- St. Bernard Parish Hospital
- St. Tammany Parish Hospital
- Thibodaux Regional Medical Center
- West Jefferson Medical Center
- Willis Knighton Medical Center – South Campus
- Woman’s Hospital – Baton Rouge



## June 2021 Flight Path Data:

- The Northern flight path was used once due to inclement weather that resulted in decreased visibility and low cloud ceilings.
- There were 3 incidents where the GPS system went out and picked up the aircraft minutes later depicting the most direct route from Children’s Hospital to the aircraft.



*The yellow box indicates the neighborhood zone for flight avoidance whenever possible, as previously communicated.*