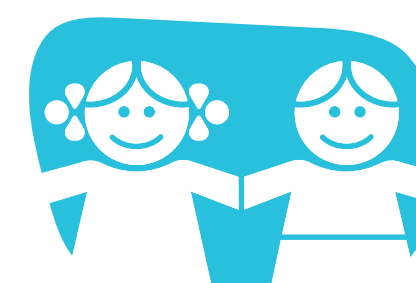
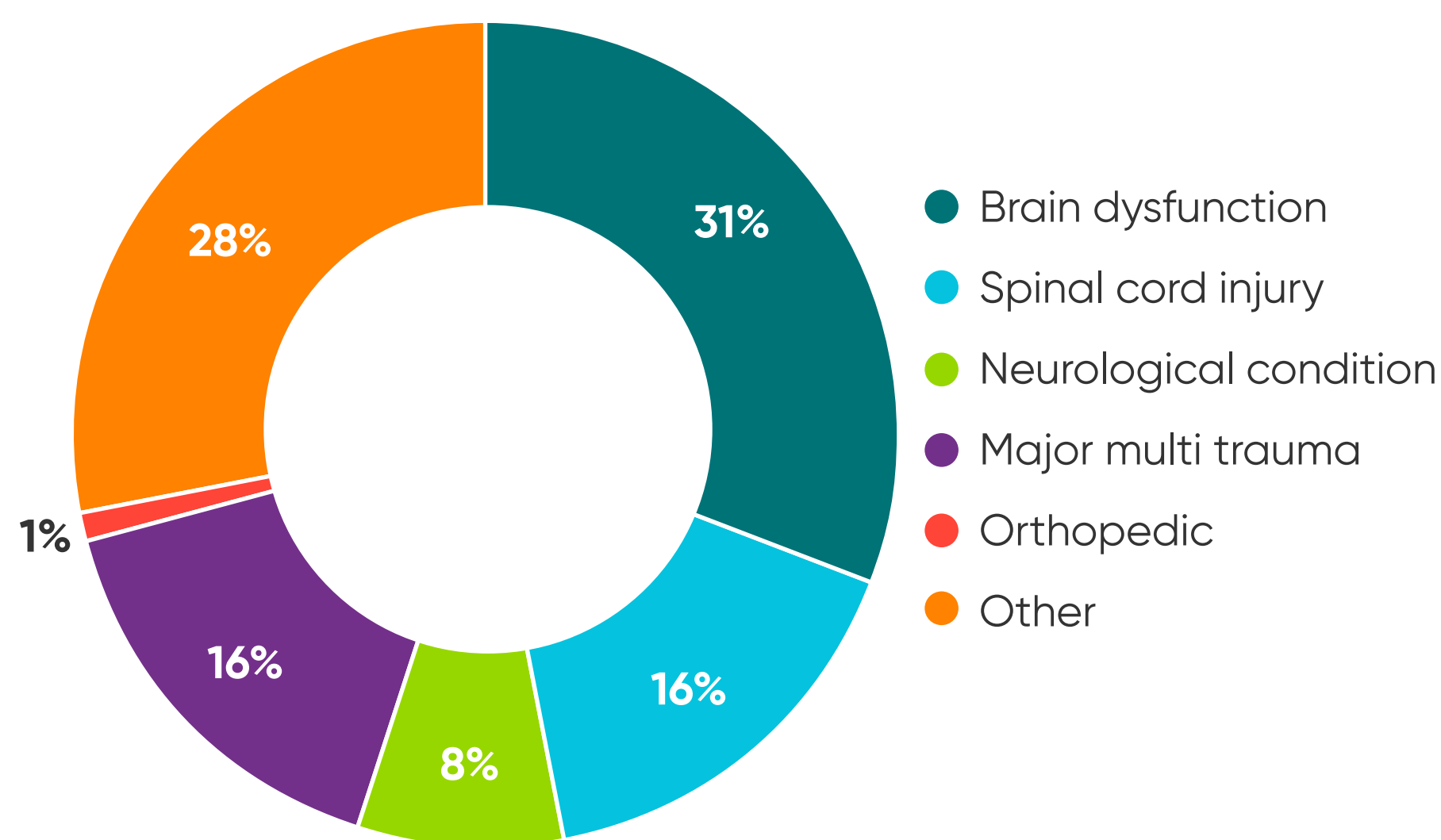


2024 Inpatient Rehabilitation Outcomes



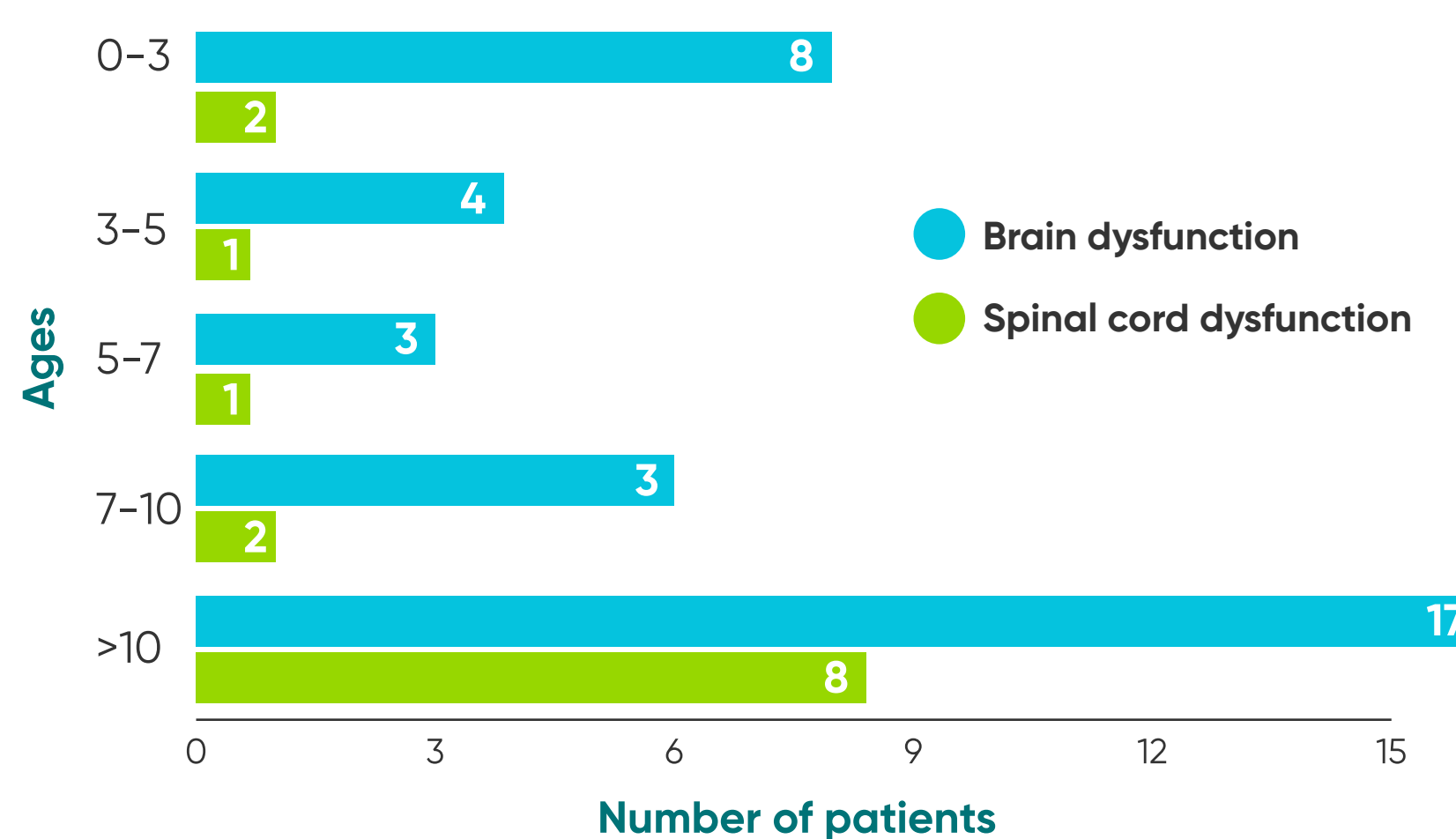
Manning Family Children's
LCMC Health

Rehabilitation admissions per diagnosis



MOST COMMON DIAGNOSIS **Brain injury**

Admissions: number of patients by diagnosis and age

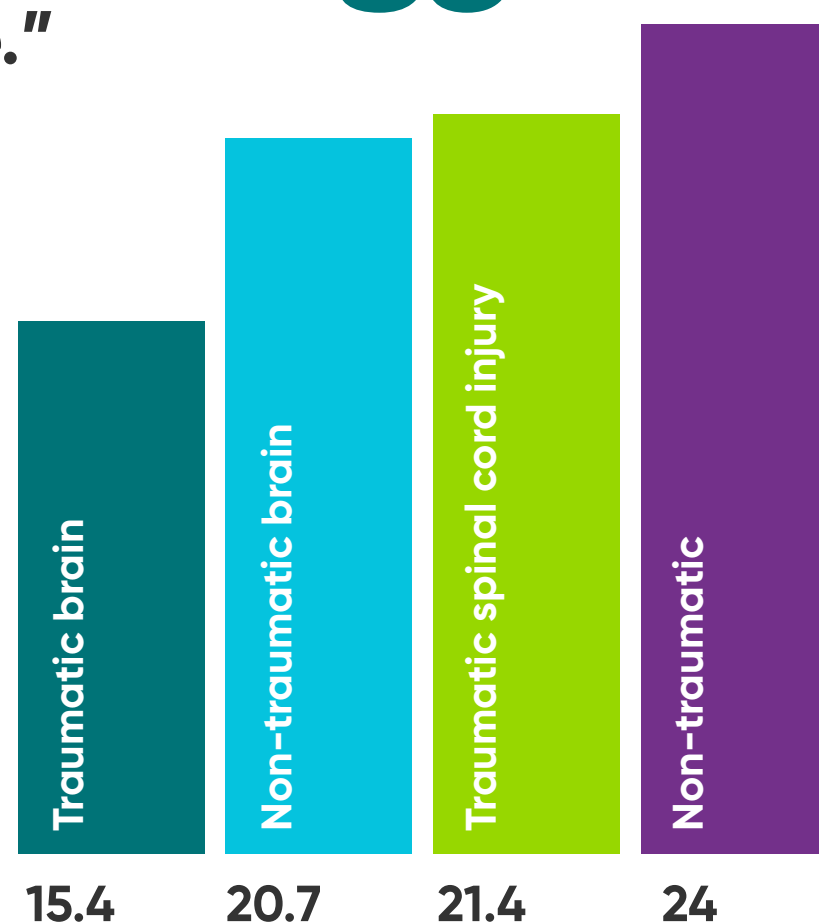


WeeFIM is an instrument that measures the severity of disability. It rates functional abilities and the "need for assistance."

TOTAL ADMITS
85



AVERAGE WEEFIM RATING GAIN
21.3



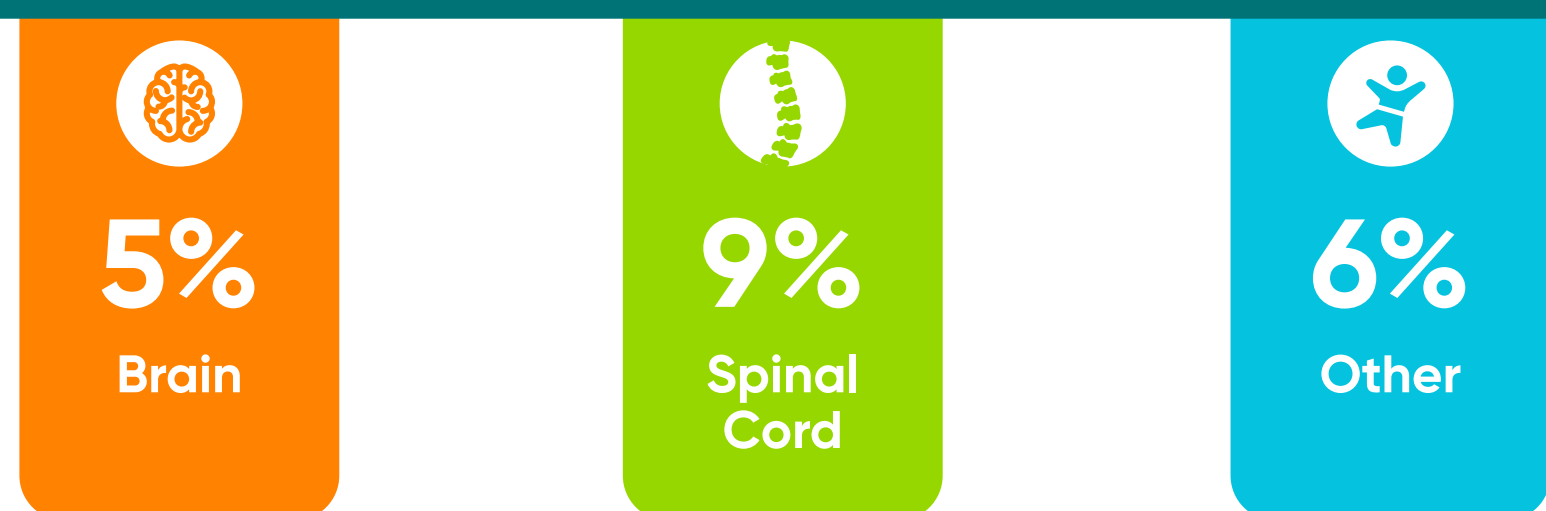
OUR PROGRAM INCLUDES **Physical, Occupational, Speech, Music, Recreation Therapies, Child Life, Social Work, Case Management, Psychology, and Neuropsychology**

Patient satisfaction

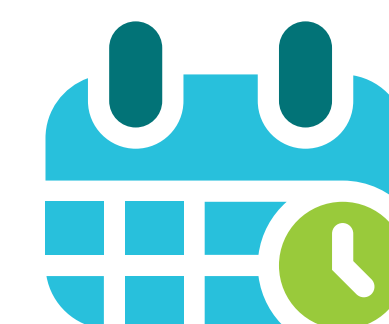


NRC AVERAGE
92.7%

UNPLANNED TRANSFERS/PROGRAM INTERRUPTIONS



Average length of stay

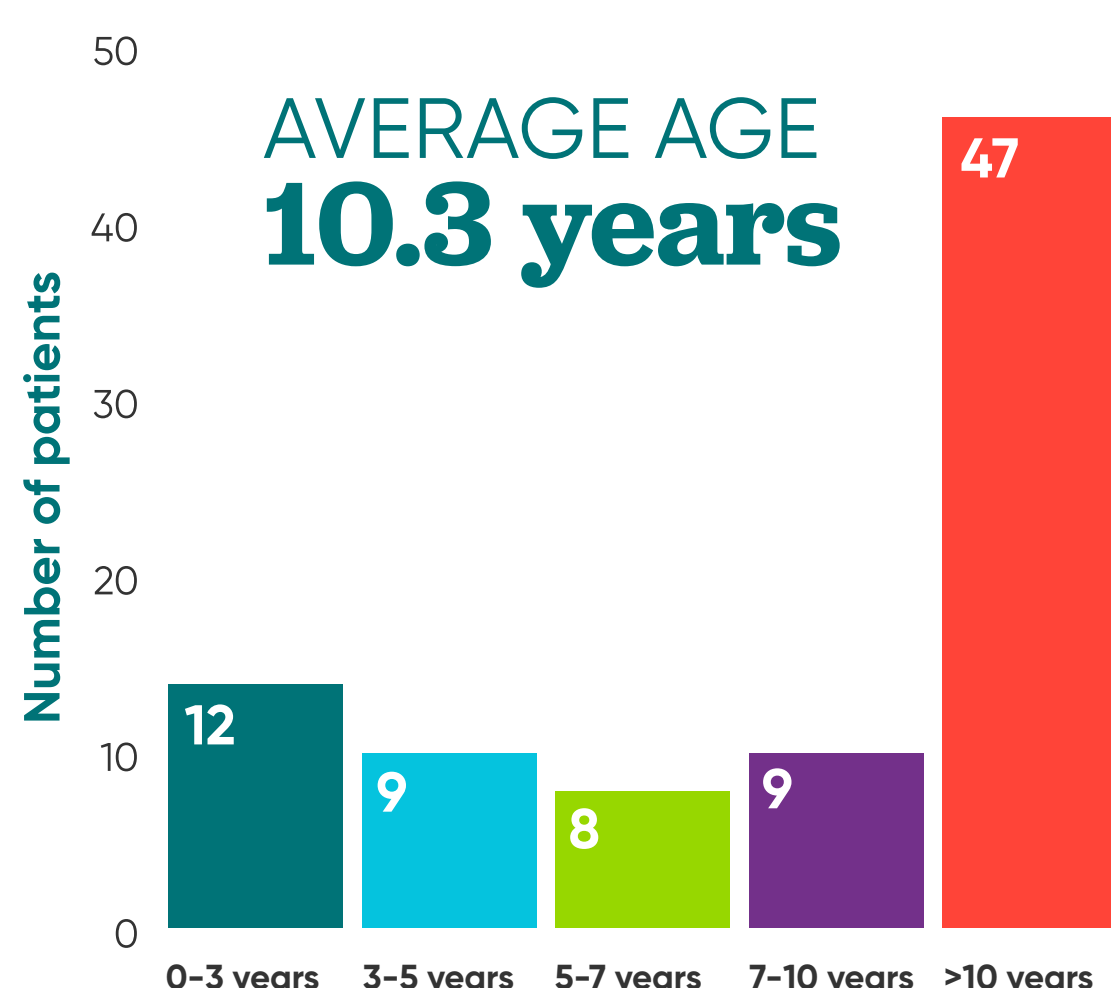


Traumatic brain dysfunction: **27.7 days**
 Non-traumatic brain dysfunction: **35.1 days**
 Traumatic spinal cord dysfunction: **36.9 days**
 Non-traumatic spinal cord dysfunction: **28.5 days**

OVERALL: **26.5 days**



Discharges: number of patients by age



Discharged to community



Brain dysfunction
92%



Spinal cord dysfunction
71%