

Monthly Children's Hospital Helicopter Flight Summary

November 2020



32

Patient Flights



1

Flight Used the Northern Flight Path

16

Emergent Overnight Flights



24

Flights to and from Lakefront Airport



Patients were flown to Children's Hospital for...

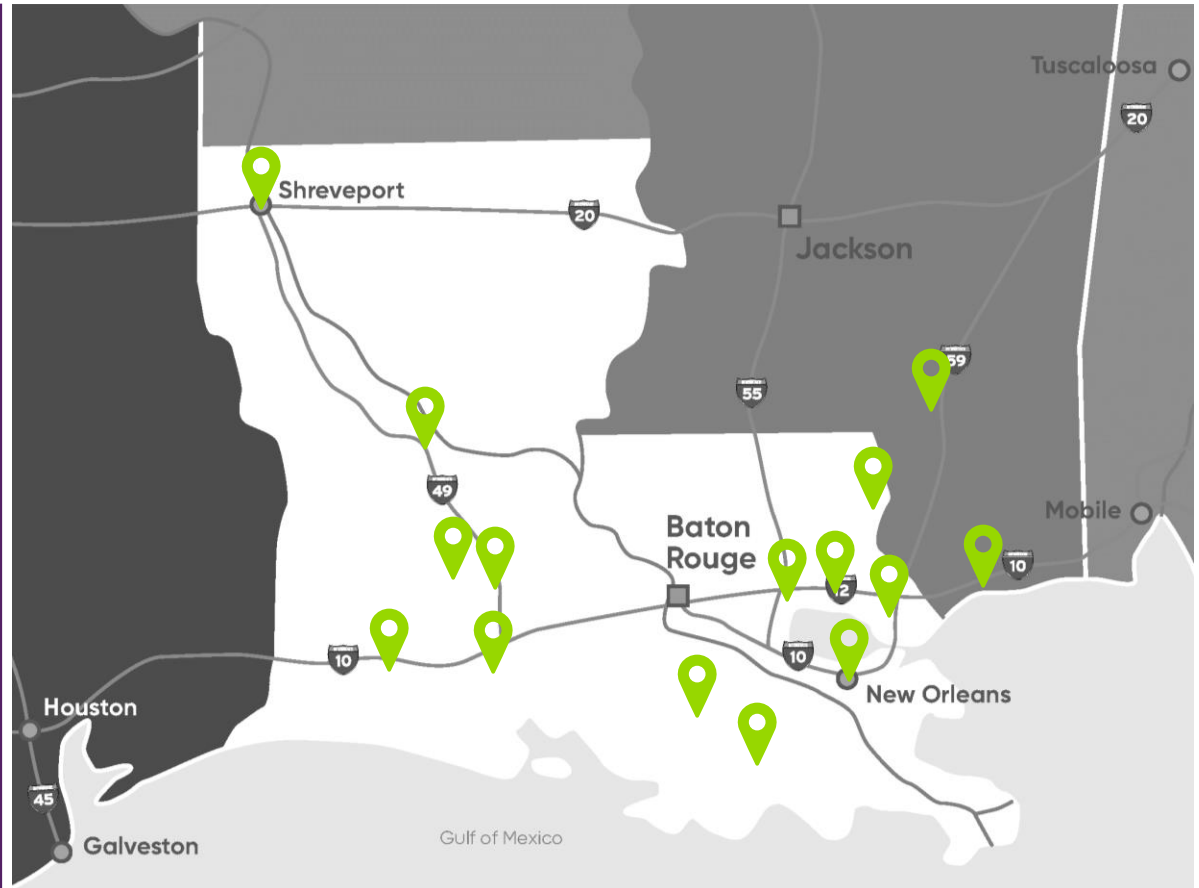
- 10 **Pediatric Critical Care Patients**
Example: respiratory distress
- 11 **Neonatal Intensive Care Patients**
Examples: critically ill premature baby, infant stroke
- 7 **Cardiac Critical Care Patients**
Examples: child in cardiac arrest; newborn with congenital heart defects
- 2 **Trauma Patients**
Examples: life-threatening burn, gun-shot victim, head injury
- 2 **Other**
Example: compromised airway



Children's Hospital
New Orleans
LCMC Health

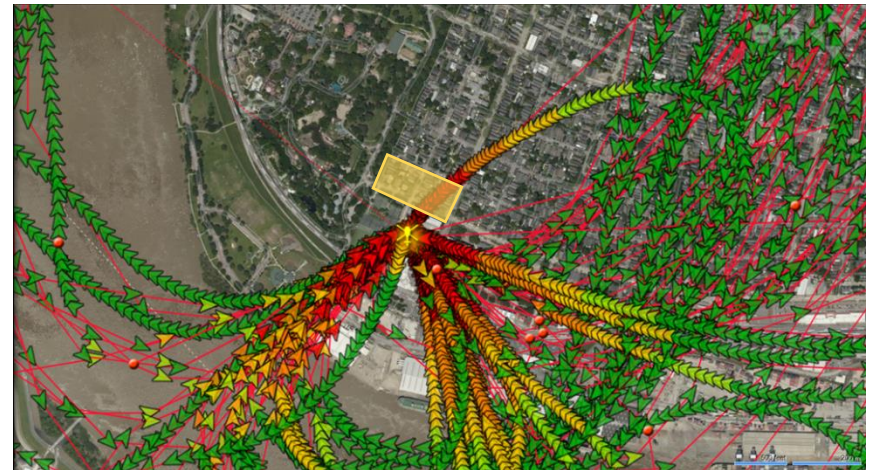
Referring facilities:

- Forrest General Hospital
- Gulfport Memorial Hospital
- Lake Charles Memorial
- Lakeview Regional
- North Oaks Medical Center
- Oakdale Community Hospital
- Opelousas General
- Our Lady of Lourdes Women's & Children's Hospital
- Our Lady of the Angels Hospital
- Rapides Women's & Children's Hospital
- Slidell Memorial
- Terrebonne General
- Thibodaux Regional
- Touro
- University Medical Center



November Flight Path Data

There was one flight that used the Northern flight path due to unfavorable wind conditions.



Yellow box indicates neighborhood zone for flight avoidance whenever possible, as previously communicated.